

# EOSTRA

# FOR SALE

PRICE:  
**£28,950**

---

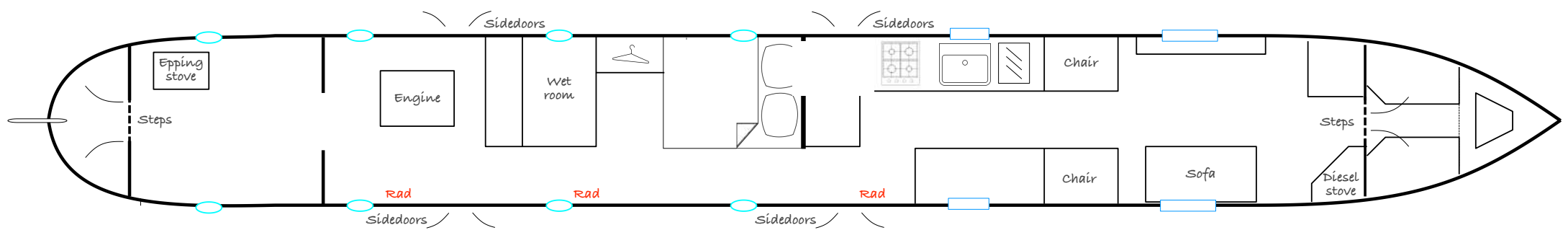
55ft  
 Traditional Style Narrowboat

**2/3 BERTH**



## BOAT SUMMARY

A 55ft traditional narrowboat with unique Ruston Hornsby Engine. Fitted with two stoves, central heating, fitted kitchen and spacious lounge. This lovely 2/3 berth boat would make an ideal live-aboard for a couple, or an excellent holiday boat.



THE ASHBY CANAL CENTRE  
 WILLOW PARK  
 STOKE GOLDING  
 NUNEATON  
 WARWICKSHIRE  
 CV13 6EU

BRIDGE 26, THE ASHBY CANAL

CONTACT US FOR A VIEWING  
**01455 212636**

# SPECIFICATIONS

[www.ashbycanalcentre.co.uk](http://www.ashbycanalcentre.co.uk)

## TECHNICAL

- Ruston and Hornsby 3 cylinder diesel engine fitted in seperate cabin
- One starter & four domestic batteries
- 80w solar panel
- Victron 1600w combi inverter.
- Bubble diesel with back boiler at front.
- Epping stove in rear cabin
- 12V and 240V Sockets throughout

## MAINTENANCE HISTORY

- Hull blacking: 2015
- Repainted; 2009
- BSC: August 2017

## HEATING/INSULATION

- Central heating from back boiler (bubble diesel stove) and engine
- Epping Stove in rear cabin

## GENERAL

- Berth: 2/3
- Length: 55'
- Style: Traditional
- Headroom: Max. 6'1"
- Extended in 1991

## COCKPITS/DECKS

- Work bench in engine bay
- Large empty rear cabin with reduced headroom - suitable to install traditional boatmans cabin

## BATHROOM

- Wet room - shower, sink & cassette toilet with spare cassette.

## WATER/GAS SYSTEM

- Water heated by twin-coil calorifier & back boiler
- Gas Bottles in bow locker

## LIVING/DINING

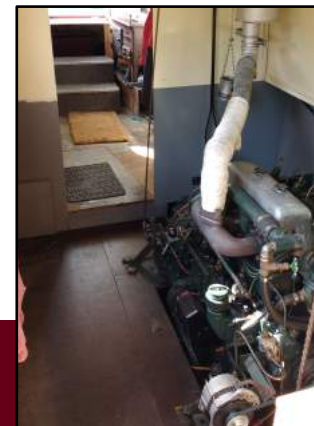
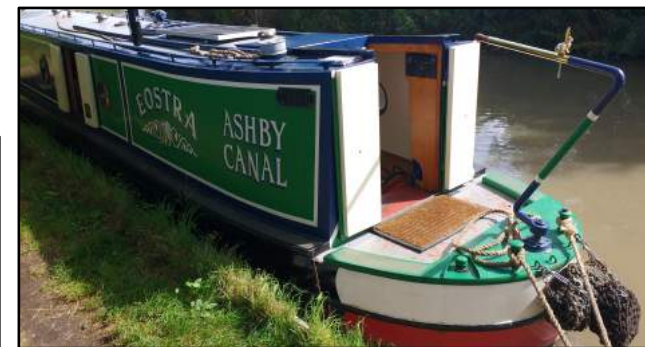
- Spacious lounge with option of convertable single bed.
- Large storage area in back cabin
- 12V Freezer under seat

## GALLEY

- 12v fridge
- Gas Oven and seperate hob
- Space for washing machine
- Side doors on port and starboard

## BEDROOMS

- Master bedroom - extra-width double
- Wardrobe and over head lockers
- Convertable single bed in lounge



These details are given in good faith but no guarantee is given or implied. Purchasers must satisfy themselves as to the condition and suitability of this vessel. We recommend that a qualified surveyer is employed. The Ashby Canal Centre are agents for this boat on behalf of the owner



THE  
ASHBY  
CANAL  
CENTRE