

TIGGA

FOR SALE

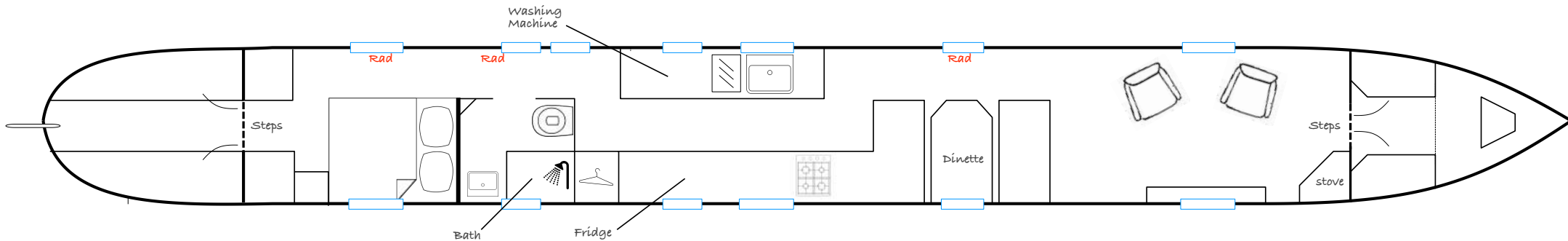
PRICE:
£32,500

61ft
Cruiser Style Narrowboat

2+2 BERTH

BOAT SUMMARY

A 61ft cruiser-style narrowboat built in 1983 by Mick Gresham. Recently repainted, this light, spacious boat consists of a large living area and fitted kitchen and comes equipped with multiple features including a central heating system ready for new live-aboards. Interior needs some attention.



THE ASHBY CANAL CENTRE
WILLOW PARK
STOKE GOLDING
NUNEATON
WARWICKSHIRE
CV13 6EU

BRIDGE 26, THE ASHBY CANAL

CONTACT US FOR A VIEWING
01455 212636

SPECIFICATIONS

www.ashbycanalcentre.co.uk

GENERAL

- Berth: 2+2
- Built: 1983 by Mick Gresham (Steelcraft)
- Length: 61'
- Style: Cruiser
- Headroom: Max. 6'0"
- Barrus Shire engine
- Multiple windows provide a light & airy feel
- Newly fitted galley & dinette by Debdale Wharf
- Some minor work needed to refresh bedroom & saloon area

MAINTENANCE HISTORY

- 2015: Hull overplated - sides 5mm and the counter floor 6mm
- Full repaint late 2016

HEATING/INSULATION

- Central heating system through Eberspacher heater
- Diesel stove in living area
- Polystyrene Insulation
- Multiple radiators throughout

ELECTRICAL

- Four domestic & one starter battery
- x2 100W solar panels
- Victron 2000W Compact Multiplus Inverter
- Five double and one single 240v sockets and shoreline connection

DECKS

- Spacious back deck with seating, storage and gas locker
- Diesel (for stove) & water tank located on front deck
- Covers on both decks

BATHROOM

- Thetford Porta Potti toilet
- Over-bath shower with sink and corner shelving
- Automatic 12v water pump located in galley
- Water heated through single-coil calorifier

LIVING/DINING

- Dinette converts into small double.
- Spacious and light with corner stove and intergrated car radio system
- Windows on front bulkhead

GALLEY

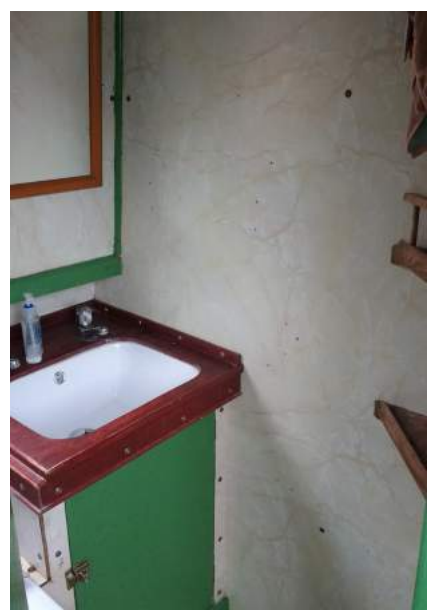
- Thetford Capri gas cooker with grill & four-burner hob
- Recently repainted
- Shoreline 12v fridge/freezer & Beko 240v washing machine
- LED spotlights and water filter

BEDROOMS

- One standard-width fixed double with overhead & under-bed storage
- Multiple wardrobes and shelving



These details are given in good faith but no guarantee is given or implied. Purchasers must satisfy themselves as to the condition and suitability of this vessel. We recommend that a qualified surveyer is employed. The Ashby Canal Centre are agents for this boat on behalf of the owner



THE
ASHBY
CANAL
CENTRE