

LEA

FOR SALE



PRICE:
£74,995

62FT // 1998

4 Berth / Gardner 4LK
Traditional Layout

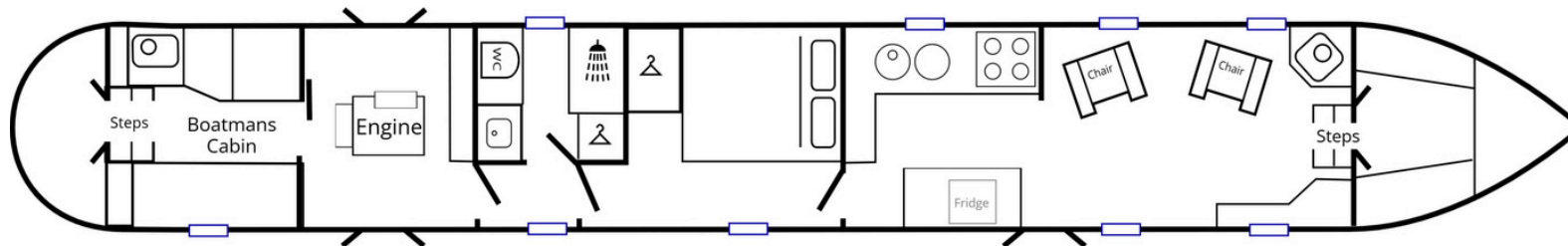
SUMMARY

Lea is a stunning Traditional Narrowboat from the well regarded Les Allen & Sons.

Featuring a magnificent Gardner 4LK with stunning engine room and traditional boatman's cabin.

The fit out and build quality of the boat is second to none with rich panelled oak and thick detailed trims.

Lea is a quality boat from bow to stern and features a well maintained paintjob from Rob Bryan of Stoke Golding



THE ASHBY CANAL CENTRE, WILLOW PARK MARINA, STOKE GOLDING, NUNEATON, WARWICKSHIRE, CV13 6EU

CONTACT US FOR A VIEWING

01455 212636

boatsales@ashbycanalcentre.co.uk

LEA SPECIFICATION

GENERAL

- YEAR BUILT: **1998**
- BUILDER: **LES ALLEN & SONS**
- STYLE: **TRADITIONAL / TUG**
- LAYOUT: **BOATMANS CABIN**
- BERTH: **2+2**
- LENGTH: **62'**
- HEADROOM: **6'3"**
- ENGINE: **GARDNER 4LK (1959)**
- ALTERNATOR: **24V 75amp**
- GEARBOX: **PRM 160**
- GENERATOR: **BETA BG905**
- STEEL THICKNESS: **12/6/5/4**
- FIT OUT: **OAK PANELLING WITH T&G UNDER GUNWALE**
- PORTHOLES: **DOUBLE GLAZED**

ELECTRICAL

- 24V Starter Battery
- 4x110ah Leisure Batteries linked to provide 24V
- 5kVA Beta Generator
- 24/1600/40 Victron Multiplus
- Galvanic Isolator
- Shoreline Socket
- 2 x 50W Solar Panel
- Bilge Pump
- 12V and 240V Sockets
- LED Downlight & Wall Lamps

WATER/GAS

- 160Gal (approx) Water Tank
- 12 Gallon Horizontal Calorifier with Immersion
- Water Pump and Accumulator
- 2 x 13Kg Gas Bottles

HEATING

- Kabola Diesel Stove
- 2 x Radiators & Heating pipes in to Rear Cabin (disconnected)
- Spray Foam Insulation

LIVING/DINING

- 2 x Leather Easy Chairs
- Diesel Stove w/ tiled surround
- Cupboards and Shelves
- Stove with Tiled Surround
- Separate Pull Out Table
- Side Doors
- Carpet Flooring
- Wall Lamps

BATHROOM

- Pump Out Toilet
- Sink with Cupboard
- Tiled Shower w/ Curtain
- Towel Rail (disconnected)
- Vinyl Floor

BEDROOM

- Double Bed with Drawers
- 2 x Wardrobe
- Cupboard
- Overhead Cupboard
- Houdini Hatch
- Reading Lights
- Carpet Flooring
- Washing Machine

GALLEY

- Vanette 4 Burner Hob
- Grill and Oven
- 240V Fridge
- Twin Bowl Stainless Sink
- Microwave
- Beautifully Tiled Floor
- Houdini Hatch
- Stainless Steel Worktop with tiled splashback
- Excellent Fit Out and Storage

BOATMAN'S CABIN

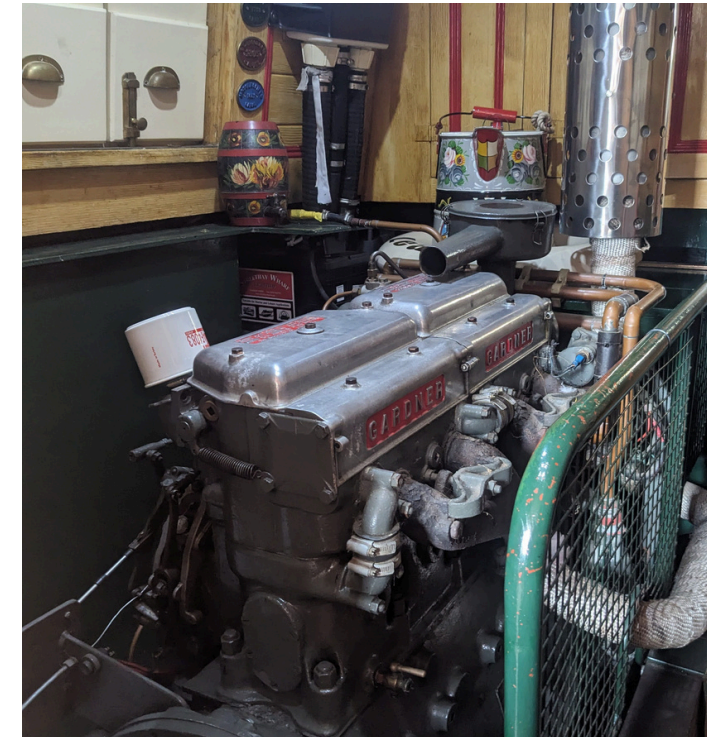
- Beautifully fitted and maintained Traditional Boatmans Cabin
- Beautifully painted
- Pull Down Double
- Wardrobe (behind fake pull down table)
- Traditional Epping Stove

ENGINE ROOM

- Fitted Engine Room
- Excellent access to electrics and engine
- Generator in casing

MAINTENANCE

- Two Pack Blacking on Build
- Last Blacked Sept 2020
- Serviced April 2024
- BSS Expires March 2026
- Professionally Painted 2018



These details are given in good faith but no guarantee is given or implied. Purchasers must satisfy themselves as to the condition and suitability of this vessel. We recommend that a qualified surveyor is employed. The Ashby Canal Centre are agents for this boat on behalf of the owner



